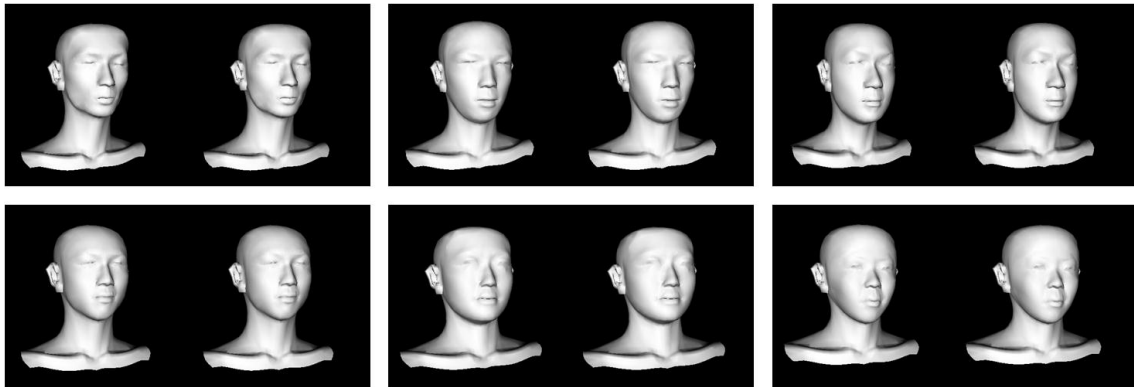
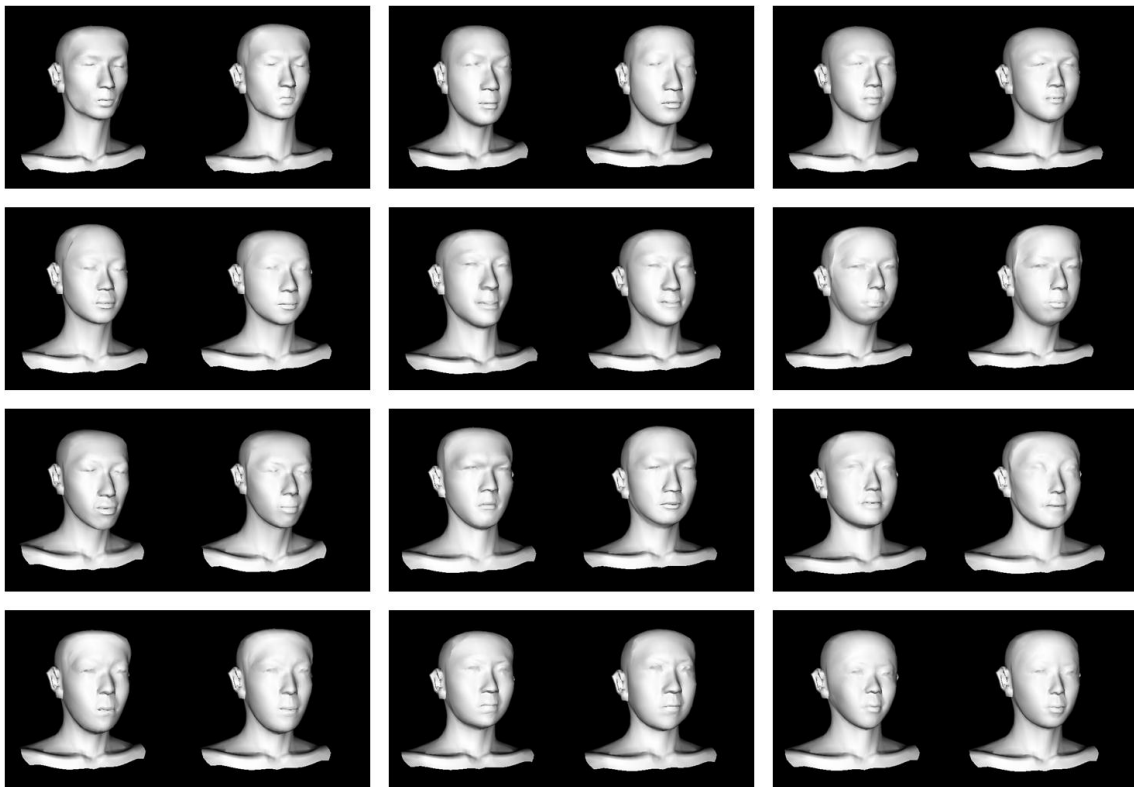


## 3D Human Head Geometry Estimation from a Speech Supplemental Images



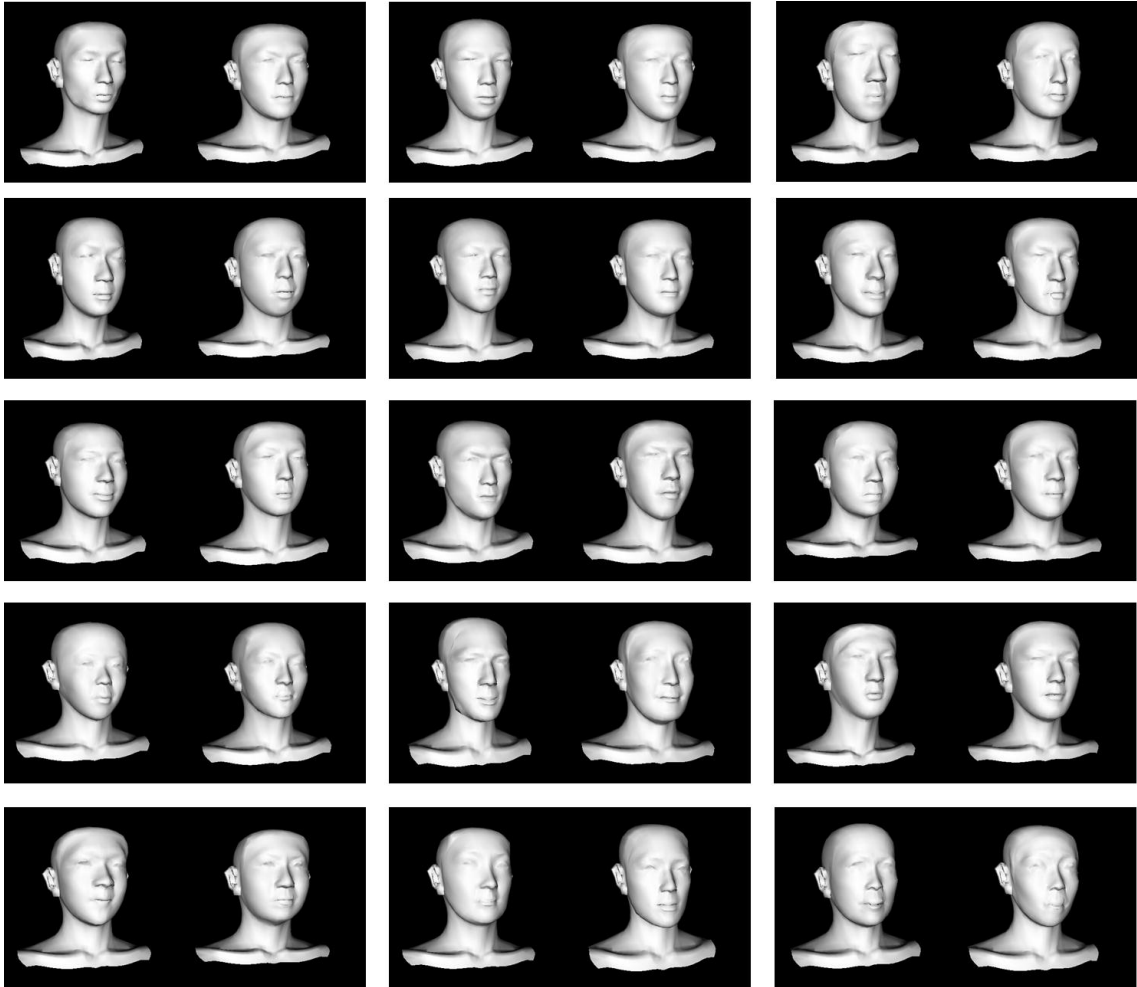
**Figure 1:** *The closed test results.*

*left: ground truth right: estimated 3D geometry*



**Figure 2:** *the open test results.*

*left: ground truth right: estimated 3D geometry from same individuals' Japanese vowel "a"  
recorded at different timing to the closed test.*



**Figure 3:** *the open test results (not included same person in training data completely)*

*left: ground truth right: estimated 3D geometry*